



THE SERVICE YOU EXPECT, THE VALUE YOU DESERVE.
SERVICE AND SUPPORT IS OUR PASSION.

NOT FAMILIAR WITH ATREO? WE'VE BEEN AROUND FOR 40 YEARS.

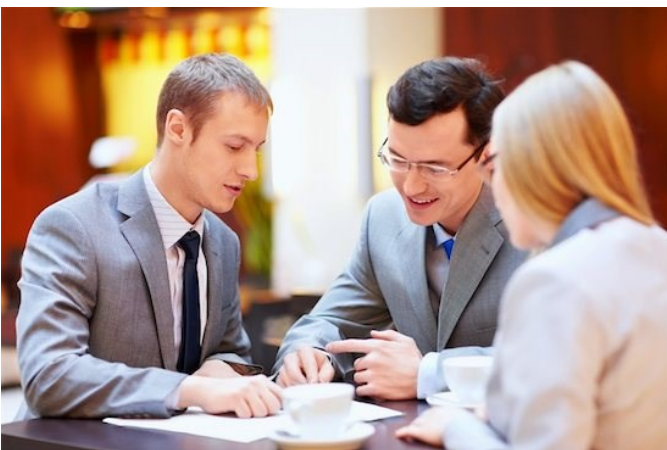
We're trusted by leading hospitals to provide rapid, reliable support with predictable pricing. Atreo is a company founded by people with years of service experience in the healthcare industry with a deep knowledge base in logistics automation.

Our leadership team, collectively with decades of experience, recognizes that service should be done a different way. That means paying attention to the customer, listening and caring about solving problems quickly, professionally and at a reasonable price. *That's Atreo!*



Our service expertise includes:

- + Pneumatic Tube Systems
- + Automated Trash, Recycling and Soiled Linen Collection and Transport Systems
- + Vertical Conveyor Systems
- + Access Control Systems (installation and service)
- + Financial Institutions



OUR PHILOSOPHY IS SIMPLE –
WE LISTEN FIRST.

We listen first, we then strive to give you exactly what you need. Atreo's goal is to offer increased service levels at a fair price, providing you with superior value.

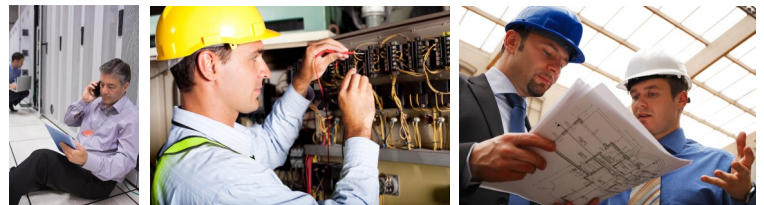
ATREO SERVICES PROVIDES YOU WITH A SMART CHOICE

...WHEN YOU DIDN'T REALIZE YOU HAD ONE

Perhaps you are looking for a **more responsive, flexible or reasonably priced solution**. Atreo partners with hospital engineering facility teams challenged by reduced budgets, limited personnel and increased delivery expectations.

We provide select support services nationwide designed to keep your system running smoothly. In addition, we can deliver capabilities tailored to your unique operating environment. As a part of our offerings, we provide everything from support agreements (SAs) to station relocations.

Consider the following:



- + **Support agreements (SAs)**
- + **Resident technicians**
- + **Operation contracts**
- + **On-demand service**
- + **24/7/365 service**
- + **On-site training classes**
- + **Spare parts**
- + **Equipment relocations**

Pneumatic Tube Accessories for Any Manufacturers' System:

- + 4-inch and 6-inch carriers
- + 4-inch and 6-inch station bin liners
- + 4-inch and 6-inch carrier liners/inserts
- + Spare parts inventory



1810 Blake Street | Denver | CO | 80202 | 844.819.5897 | www.atreoservices.com | service@atreoservices.com

Atreo Services is affiliated with **TransVac** SOLUTIONS